

Selected Differences in Social Circumstances and Outcomes between Females and Males

The following pages present a brief summary of contemporary differences in social circumstances and outcomes between men and women in relation to education, employment, incomes, health, community life, crimes and safety, and families. Available evidence indicates that outcomes for women are relatively positive in educational progress and health; and less favourable in respect of employment, incomes, some elements of family life – including personal safety, and in aspects of English literacy or fluency.

EDUCATION

Women experience more favourable educational outcomes than men, in their progress in primary school years, lower rates of early school leaving, and higher levels of participation in university education.

* * * *

School Outcomes

The 2009 Australian Early Development Index reflects the assessment of the emotional, cognitive, communication, physical and social development of prep pupils by their teachers. A key measure of personal development is the percentage of children who were ranked among the lowest ten percent across Australia in one or more of these five areas of development – termed ‘vulnerable in one or more domains’. Boys were nearly twice as likely to be vulnerable in one or more of these domains, than girls.

Per cent of prep. pupils who were vulnerable on one or more domains of personal development. 2009, Aus.

Males	Females
30	17

Australian Early Years Index, 2010

Males also more often leave school early, and are less likely to attend a university, or acquire a degree, than females.

Per cent of 20-24 year-olds who left school before completing year 11, 2006

	Males	Females
Metro	14	8.4

Census, 2006, Customised Tables

Per cent of 20-21 year-olds who were attending university, 2006

	Males	Females
Metro	36	46

Census, 2006, Customised Tables

Per cent of 25-34 year-olds who hold a degree, 2006

	Males	Females
Metro	41	49

Census, 2006

Youth Disengagement

Women however, are more often disengaged in early adulthood – that is, not in paid work or education. Such disengagement, as well as the difference between males and females, is more marked in less affluent localities such as Greater Dandenong, and less apparent in the more advantaged areas, such as Boroondara.

Per cent of 20-24 year-olds who are neither in paid employment or enrolled in education, 2006

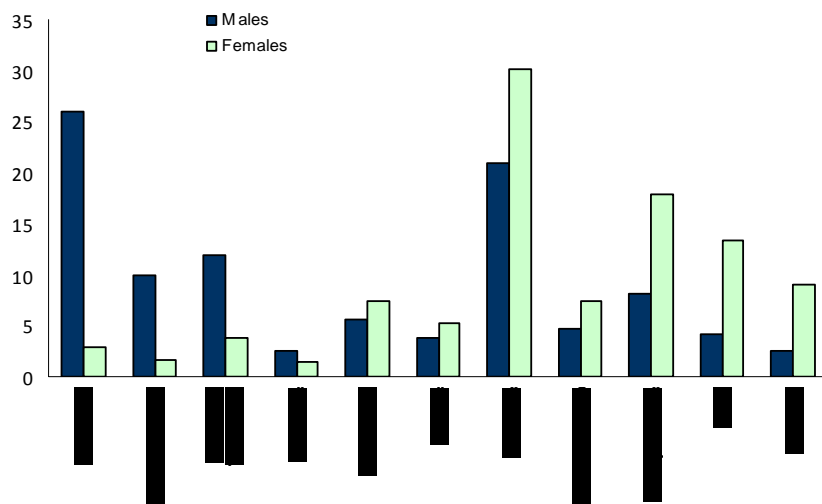
	Males	Females
Metro	8.4	11
G. Dandenong	12	18
Boroondara	4.7	4.4

Census, 2006, Customised Tables

Fields of Qualification

Among young adults with a formal educational attainment, women are more likely to hold qualifications in management, society and culture, food and hospitality, health and education, while men predominate among those qualified in the fields of information technology, engineering and architecture.

Per cent of persons aged 25 to 34 years with a qualification, by field, 2006, metropolitan Melbourne



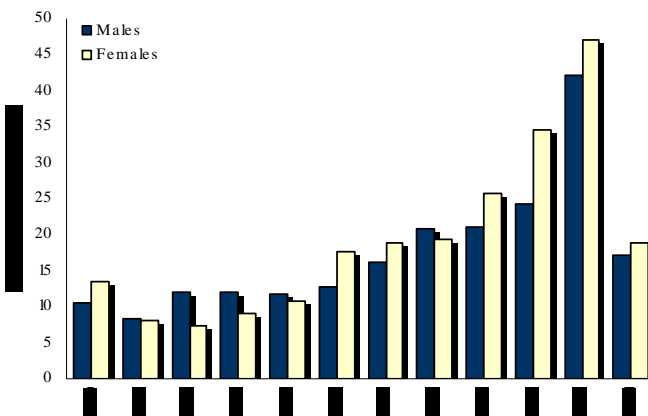
Census, 2006

ENGLISH LITERACY AND FLUENCY

English Literacy

The 2006 Adult Literacy and Life Skills Survey measured literacy and numeracy among Australian adult population. Among younger adults, more men than women had very limited literacy (termed Level One literacy – the lowest level of literacy) while of teenagers and older persons, a higher proportion of women had limited literacy.

Per cent of persons aged 18+ with 'very limited' English literacy (Literacy Level 1), 2006, Aus.



Adult Literacy and Life Skills Survey, 2006, ABS

Fluency in the Use of Spoken English

With the exception of younger people, the proportion of women with limited fluency in the use of spoken English is higher than for men.

Per cent of persons who speak English either 'not well' or 'not at all' (limited English fluency), 2006, Vic.

	Males	Females
0 to 15	28	27
15 to 24	6	2
25 to 64	25	35
65+	48	58
All ages	25	33

Census, 2006

The prevalence of limited English fluency varies widely with birthplace. Among people from a selection of the major countries of origin of recent refugees and other humanitarian settlers, women are almost twice as likely as men to experience limited English fluency.

Per cent of persons aged 25-64 years with limited English fluency, by selected birthplaces, 2006, Vic.

	Males	Females
Sudan	29	60
Afghanistan	24	44
Iraq	25	43
Burma	37	41

Census, 2006, Customised Tables

EMPLOYMENT

Women are less likely to have paid work than men, while among those in employment, fewer women than men are employed full-time. The distribution of women and men among occupations and industry sectors also differs markedly.

* * * *

Paid Employment

In the period from 1978 to 2010, the proportion of men aged 15 years or more who were employed or seeking work (termed the 'labour force participation rate') declined slightly, from 80 to 74%, while the corresponding proportion of women rose from 44 to 59%.

The findings of the 2006 Census – the latest year for which such information about metropolitan Melbourne is available - show that women are less likely to be in paid employment than men.

Per cent of persons aged 15+, who are in paid employment, 2006

	Males	Females
Metro	69	55

Census, 2006

Among those in paid employment, younger women are approximately three times as likely to be employed part-time as men, while older women are about four times as likely to work on a part-time basis.

Per cent of persons in paid employment, who work part-time, 2006

age: 25-34	Males	Females
Metro	13	31

age: 45-54	Males	Females
Metro	11	44

Census, 2006

As a consequence of these trends, men aged 15+ are twice as likely as women to be engaged in full-time employment.

Per cent of persons aged 15+ who are in full-time employment, 2006

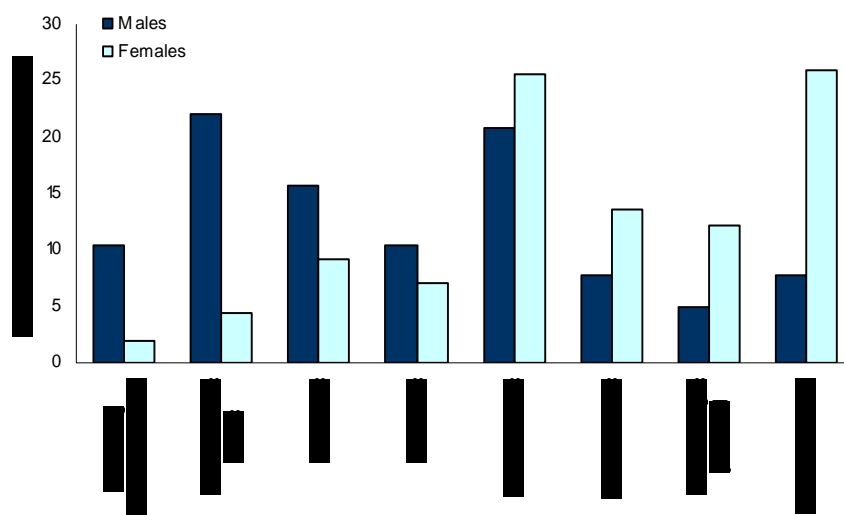
	Males	Females
Metro	53	28

Census, 2006

Occupations and Industry of Employment

Women and men are also distributed unevenly among occupations, with females forming the majority of people employed in clerical and administrative, sales and community occupations, while males are more often employed as machinery operators, tradespersons and technicians.

Per cent of employed persons by occupation of employment, 2006, metropolitan Melbourne



Census Customised Tables, 2006

Of people in paid work, men are more often employed in the construction, transport and manufacturing fields, while women preponderate among those employed in the sectors of health, education and retail trade. (Census, 2006)

INCOMES

Women receive lower incomes than men, in part because fewer women are employed full time. Even so, among those in full-time work, women receive the lower incomes.

* * * *

Average incomes – including salaries and government support payments – are lower among women. Within metropolitan Melbourne, individual gross weekly incomes among women aged 15 or more were 58% of those received by men.

Median Weekly Gross Individual Incomes, persons aged 15+, 2006, metropolitan Melbourne

	Males	Females
Metro	\$639	\$369

Census, 2006

Among women and men in full-time employment however, this disparity diminishes, though it does not entirely vanish. In 2006, median weekly gross individual incomes for women in full-time employment were 86% of those for men.

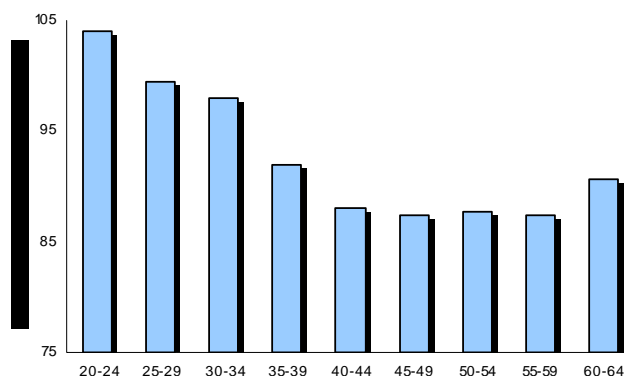
Median Weekly Gross Individual Incomes, persons in full-time employment, 2006, metropolitan Melbourne

	Males	Females
Metro	\$957	\$823

Census, 2006, Customised Tables

Where men and women who are in full-time employment, aged 20 to 64, and who are working 40 hours per week, are compared, the difference narrows further, with women's incomes reaching 92% of those of men. Moreover, the ratio between women's and men's incomes varies with age, declining from 104% among younger people, to 87% among those aged 55 to 59.

Women's Weekly Income as a Percentage of Men's Incomes, by age, 2006, metropolitan Melbourne



Census 2006, Customised Tables

FAMILIES AND HOUSEHOLDS

Women are more likely to be widowed, and in older age, account for most lone person households. Among sole parents with dependent children, women are generally younger, care for more children, are less often employed and receive a lower income.

* * * *

Lone Person Households

Women and men each account for about half of all lone person households. Owing to the higher mortality rate among older men though, nearly three-quarters of lone persons over the age of 85 are women.

Per cent of lone person households that are occupied by a female, 2006

	85 years	All ages
Metro	77	56

Census, 2006, Customised Tables

Marriage

Compared with men, women are more than twice as likely to be married at 20-24 years, due largely to the fact that, across Melbourne, women are an average of 2.7 years younger than their partners.

Per cent of persons aged 20-24 years, who are married, 2006

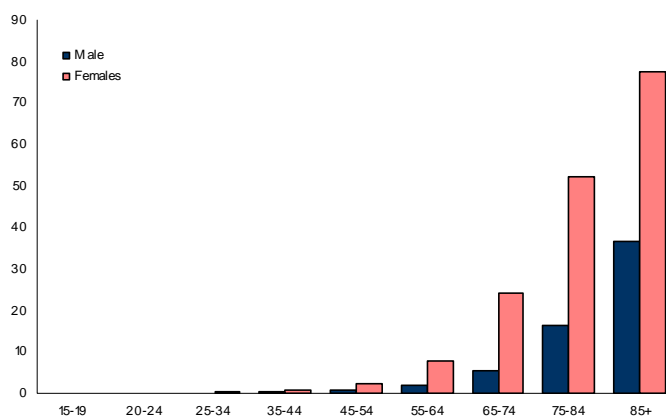
	Males	Females
Metro	3.1	8.0

Census, 2006, Basic Community Profiles

Widowhood

A further consequence of the higher mortality rates among males is that women account for most people who are widowed, in any age group.

Per cent of men and women who are widowed, 2006, metropolitan Melbourne



Census, 2006, Customised Tables

Sole Parents

Nearly nine out of ten sole parents with dependent children¹, are women.

Per cent of sole parents with dependent children, by gender, 2006, metropolitan Melbourne

	Males	Females
Sole parents with dependent children	12	88
Sole parents with 3 or more dependent children	8	92

Census, 2006, Customised Tables

Among persons aged 25-29 years in Melbourne though, female sole parents outnumber males by 15 to 1.

On average, female sole parents with dependent children are younger, care for a greater number of children, receive lower incomes and are less likely to be in paid employment, than their male counterparts.

Selected characteristics of sole parents with dependent children, 2006, metropolitan Melbourne

	Males	Females
Average number of children	1.4	1.6
Per cent in paid employment	69	51
Median weekly gross individual income	\$657	\$463
Median age	44	32

Census, 2006, Customised Tables

¹ That is, aged 0-15 years or students up to 24 years

HEALTH and DISABILITY

Men have a higher mortality rate throughout life, a lower life expectancy, a higher prevalence of drug use, and are generally less likely to monitor their health regularly, than women. Patterns of mortality and disease differ somewhat between men and women.

* * * *

Life Expectancy and Mortality

Males have a lower life expectancy, and experience higher death rates than women.

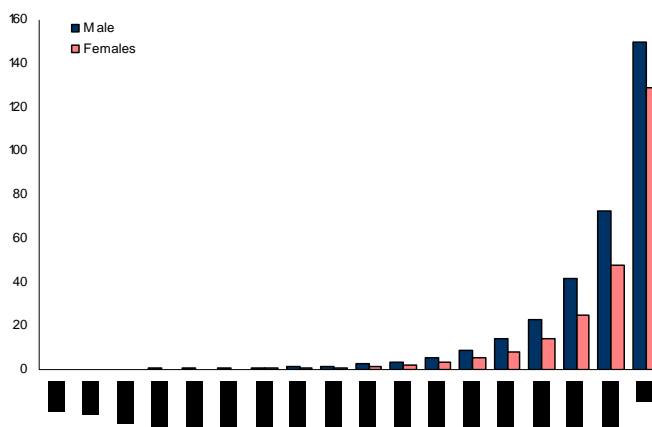
Life expectancy at birth, 2007, Vic.

Males	Females
79	84

Department of Health, Victoria, 2010

Female mortality rates are a third of male rates among younger adults, a half of male levels in middle-age, and rise to approximately two-thirds of male rates among those aged 65 years or more.

Deaths per 1000 people, by age, 2007, Vic.



Deaths Australia, 2009, ABS

Causes of death differ somewhat between women and men, with males accounting for most of those who die as a result of suicide, transport accidents and poisonings.

Deaths per 100,000 people, by selected causes, 2007, Vic.

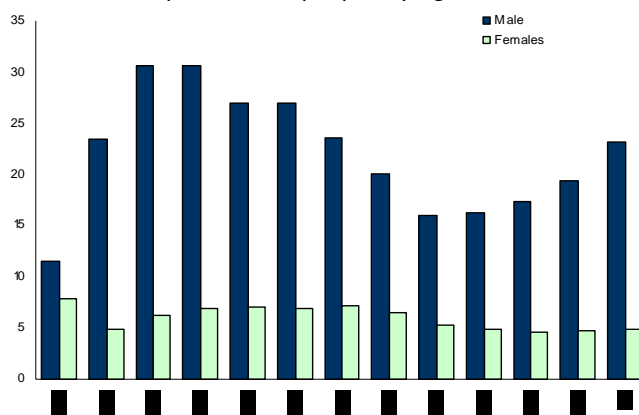
	Males	Females
All causes of death	58	23
Intentional self-harm	14	3.0
Transport accidents	9.3	3.8
Accidental poisoning	2.3	0.3

Deaths Australia, 2009, ABS

Suicide

Among most age groups, females account for about one-fifth of all suicides. Deaths Australia, 2009, ABS

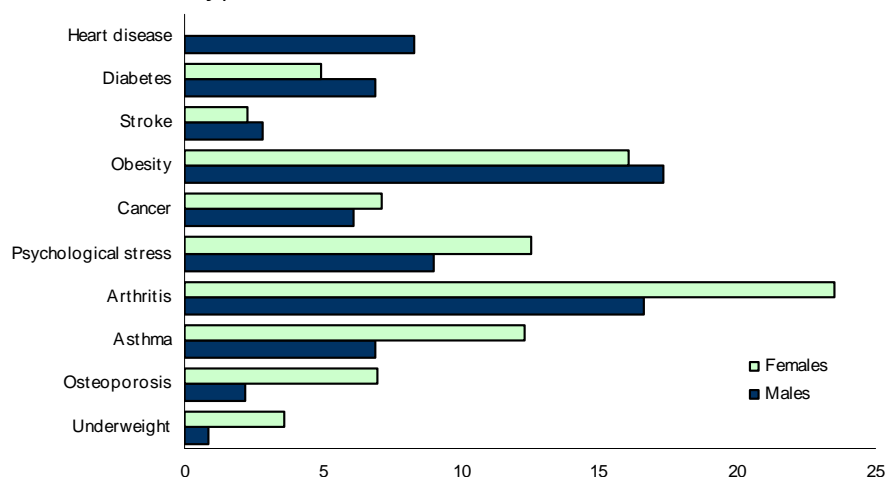
Suicide rate per 100,000 people, by age, 2001-5, Aus.



Health Conditions

The prevalence of many health conditions among men and women differs substantially. For example, a higher proportion of women experience conditions such as arthritis, asthma, osteoporosis, psychological stress and low weight, while rates of heart disease and diabetes are slightly higher among men.

Per cent of persons with selected health conditions, 2008, Vic.



Psychological distress: High or very high psychological distress (30-50 on Kessler scale)
Victorian Population Health Survey, 2008

Drug Use

Men account for a substantial majority of regular drinkers, and are more often smokers and excessive drinkers.

Per cent of persons who drink or smoke, 2008, Vic

	Males	Females
Weekly alcohol use	54	37
Risky alcohol use, persons 18-24	21	17
Current smokers	21	17

Victorian Population Health Survey, 2008

Average years of life or health lost due to heroin use or dependence, 2001, Vic.

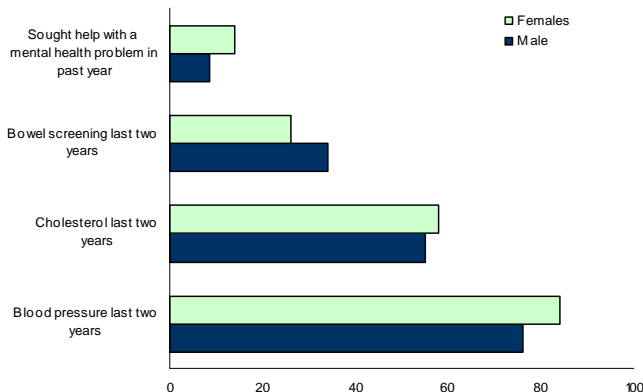
	Males	Females
Heroin abuse/dependence	1.6	0.5

Department of Human Services, 2005

Health Care and Monitoring

Women appear slightly more inclined than men to undergo health checks for a selection of conditions, with the exception of bowel screening.

Per cent of persons who underwent selected health checks in the recent past, 2008, Vic.



Victorian Population Health Survey, 2008

Disability and Caring

The overall prevalence of disability is similar for women and men.

Per cent of persons with a disability (age adjusted), 2006

	Males	Females
Metro	4.1	4.4

Census, Basic Community Profiles, 2006

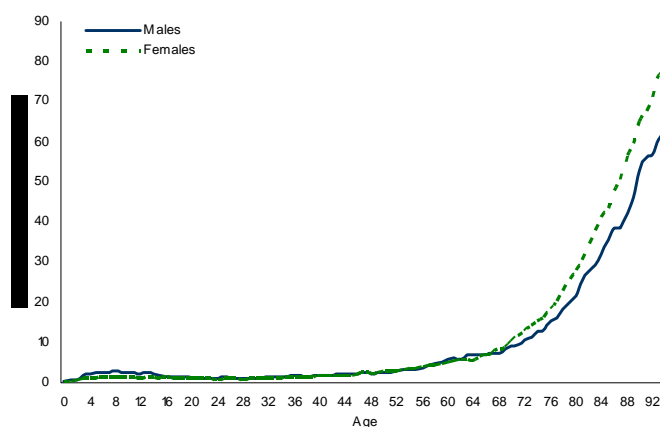
Among older residents however, a higher proportion of women than men are disabled.

Per cent of persons aged 65 years or more, with a disability, 2006

	Males	Females
Metro	16	23

Census, Basic Community Profiles, 2006

Per cent of persons with a disability, by age, 2006, metropolitan Melbourne



Women account for most (59%) of those who provide unpaid care for a person with a disability.

Per cent of persons providing unpaid care for a person with a disability, 2006

	Males	Females
Metro	9	13

Census, Basic Community Profiles, 2006

SPORT AND PHYSICAL RECREATION

While overall levels of exercise are similar for men and women, patterns of sport and physical recreation differ in important respects.

* * * *

Exercise and Sports

Though a similar proportion of women and men engage in exercise, most participants in organised sports groups are men.

Per cent of persons who exercise to an extent sufficient to satisfy national guidelines, 2008, Vic.

Males	Females
61	60

Victorian Population Health Survey, 2008

Per cent of persons who are members of a sports group, 2008, Vic.

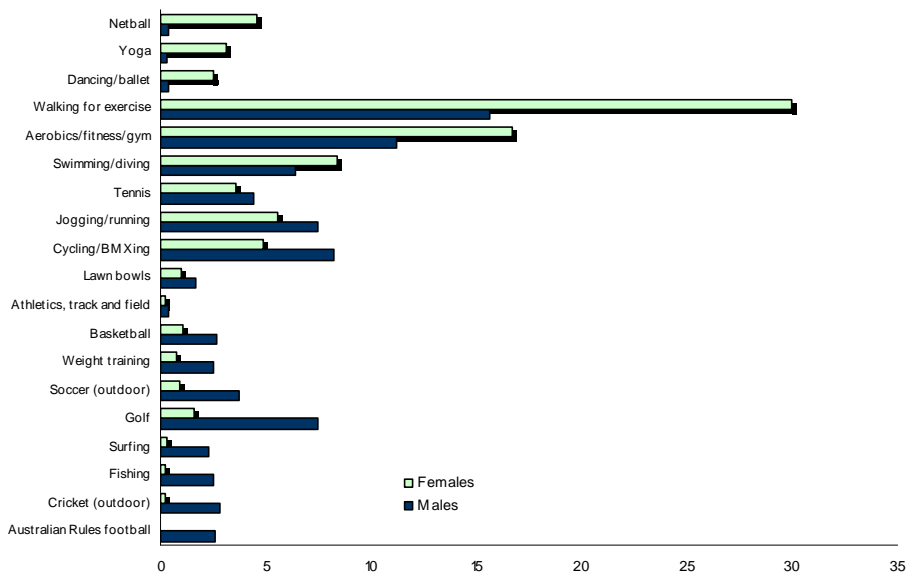
Males	Females
32	20

Victorian Population Health Survey, 2008

Patterns of Sport and Physical Recreation

Patterns of participation in physical recreation differ markedly between females and males, with women predominating in netball, yoga, dancing, walking and aerobics, while men form the majority of those who participate in football, soccer, cricket, basketball, golf and fishing.

Per cent of persons who participate in selected sports, 2008, Vic.



Participation in Sport and Physical Recreation, Australia, 2009-10, Cat. 4177.0, Australian Bureau of Statistics

TRANSPORT

The 2006 Census recorded the mode of transport used by employed persons to travel to their place of work. The use of trains, trams, buses and taxis was similar for men and women. However, more men than women drove a car to work, or travelled by truck, motorbike or bicycle. Women, on the other hand, formed the majority of car passengers and of those who walked to work.

Users of selected modes of transport for travel to work: per cent who are males and females, 2006, metropolitan Melbourne

	Males	Females
Car, as passenger	44	56
Walked only	49	51
Car, as driver	57	43
Bicycle	75	25
Motorbike/scooter	88	12
Truck	97	3

Census, Basic Community Profiles, 2006

COMMUNITY LIFE

Investigations of the levels of involvement in community life have identified modest disparities in levels of involvement in community activities and in community affiliation, among women and men.

* * * *

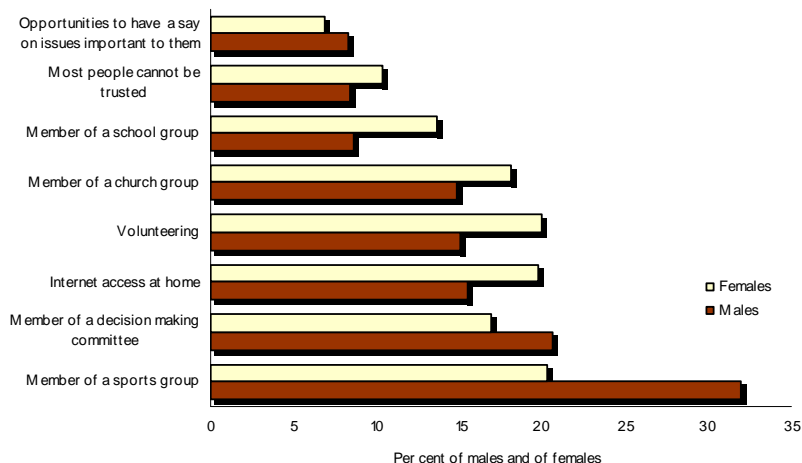
Community Support and Connection

The Victorian Population Health Survey and the Census have documented aspects of participation in, and affiliation with, the community. Among the measures used are levels of volunteering, access to personal support, participation in community activities or groups, and attitudes toward the community.

In response to inquiries featured in the 2008 Victorian Population Health Survey, similar proportions of men and women indicated that they attended support groups or community events, participated in action on behalf of their local community, had regular contact with others, or were able to secure assistance from others when needed.

However, differences emerge in relation to other aspects of community life, with women more likely to be members of a school or church group, to have internet access at home, to volunteer, or to feel that people cannot be trusted. Men, in contrast, were more often members of sports groups or decision-making committees.

Selected Measures of Community Participation or Affiliation, 2008, Vic.
(Victorian Population Health Survey, 2008, Victoria; Census 2006)



Homelessness

Overall, 56% of homeless people in Victoria are males and 44% females.

Per cent of homeless persons, 2006, Vic.

Males	Females
56	44

Chamberlain and McKenzie, 2008*²

² Chamberlain, C. and McKenzie, D. (2008). *Counting the Homeless* Cat. 2050.0 Australian Bureau of Statistics, Canberra

Males predominate among residents of boarding houses, refuges and night shelters.

Per cent of persons in accommodation, by selected types of non-private dwelling, 2006, metropolitan Melbourne

	Males	Females
Hostel for homeless, night shelter, refuge	62	38
Boarding house, private hotel	76	24
Improvised home or tent	60	40

Census, 2006, Customised Tables

Women, on the other hand, account for most of the residents of Supported Accommodation and Assistance Program (SAAP) agencies.

PERSONAL SAFETY

Males are more often victims of assault than females, though women form the majority of victims of sexual assault, and assault in the home or by intimate partners. Women are twice as likely as men, to be concerned about their personal safety at night. Men, on the other hand, account for 6 out of 7 violent offenders.

* * * *

Victims of Crime

Population surveys reveal that men are twice as likely to have been assaulted than women in a 12-month period, but much less likely to have been sexually assaulted.

Per cent of adults assaulted in the previous 12 months, 2005, Aus.

	Males	Females
physical assault	6.5	3.1
sexual assault	0.6	1.3

Personal Safety Survey, 2006, Australian Bureau of Statistics (ABS)

The pattern of assaults, reported in surveys by women, differs markedly from that reported by men. Among women who had been assaulted in the previous 12 months, 64% reported that the assault occurred at home, compared with 14% of men.

Percent of persons assaulted, who were assaulted in the home, 2005, Aus.

Males	Females
14	64

Personal Safety Survey, 2006, ABS

In addition, 78% of women who had been physically assaulted in the previous 12 months were assaulted by a person known to them, in contrast to 34% of men.

Per cent of persons assaulted, who were assaulted by a person known to them, 2005, Aus.

Males	Females
13	87

Personal Safety Survey, 2006, ABS

Reflecting these trends, women account for most of the victims of intimate partner homicide in Australia, and four-fifths of all applicants for intervention orders, victims of violence in police call-outs, and of people accommodated in emergency or short-term housing under the Supported Accommodation Assistance Program.

Number of homicides committed by an intimate partner, 2009, Aus.

Males	Females
16	84

Lloyd et al, 2010

Selected measures of male and female involvement and responses to family violence, 2007/8, Vic.

	Males	Females
Percent of aggrieved family members in intervention order applications	22	78
Percent of victims in Victoria Police family violence callouts	21	79
Percent of clients of SAAP agencies	18	82

Department of Justice, 2009

Offenders

Males account for nearly 6 out of 7 violent offenders and four-fifths of all offenders, across Victoria.

Number of offenders by age and gender: offences against the person, 2009/10, Vic.

	Male	Female
Juvenile	5,947	1,358
Less than 60 years	24,357	3,930
60+ years	663	50
All offenders	30,967	5,338
Per cent of violent offenders	85	15

Perceptions of Personal Safety

Random population surveys concerning perceptions of personal safety have found that women are more than twice as likely as men to feel unsafe at night in their neighbourhoods.

Per cent of persons who did not feel safe walking alone down their street after dark, 2007, Vic.

Males	Females
17%	43%

Victorian Population Health Survey, 2008, Victoria